

CORNER II IP67



- CORNER II IP67 is a custom made linear luminaire available in standard or custom lengths.
- Supplied with single waterproof cable & connector as standard.
- Possibility for in-out cables & connectors upon request as extra.
- L90/B10 > 50.000h, 3 Step MacAdam (for monochromatic models).
- Ingress Protection: IP67

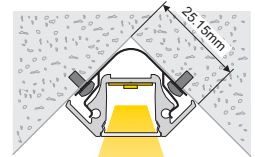
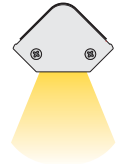
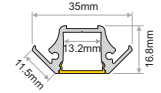
Lighting management options:

On-Off/DALI/0..10V/1..10V/DMX512/PHASE CUT/IR/RF/PUSH BUTTON/Bluetooth

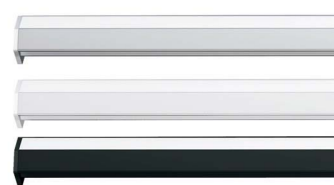
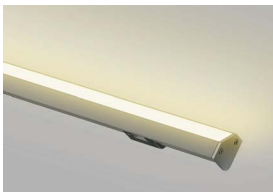
L90/B10 50.000h

Available upon request:

✓ Custom dimensions



One outdoor cable and IP68 connector (as standard)



PU (Polyurethane) material:

Tri- component polyurethane, transparent or translucent for homogeneous light dispersion.

Fully compliance with: REACH, RoHS and ELV European Directives.

EC – Directives 89/109 Contact with Food.

Resistance to: Outdoor – Chemicals – Short term water immersion – Hot water.

Thermal Shock – Heat – Abrasion

In accordance to: Florida test, Arizona test, Xenotest, QUV-A test. ACID Rain test ASTM G87. TABER test ASTM D1044. CROCKMETER test ASTM D6279

Marine Type features:

Powder Coating:

Ultra-durable powder coating that meets the requirements of GSB Master, Qualicoat Class2, EN12205 (formerly BS6496), EN13438 (formerly BS6497:1984) and AAMA 2604.

Exterior Durability:

Meets qualicoat class 2 requirements after 3 years Florida

Meets AAMA 2604-13 requirements after 5 years Florida

High Resistance to:

Weather, UV, Water and mould growth



WEATHER RESISTANT

Model	Luminaire Colour*	Colour Temperature	CRI	Watt* / Length	Type	Voltage
CORNER II IP67 (CORNER II 67)	Anodized (AN)	2000K (20)	80+ (80)	10.5W / 53cm (11W053)	Clear (CL) Opal (OP)	24VDC (24)
	Marine Type (MT)	2500K (25)		15.8W / 78cm (16W078)		
2700K (27)		21W / 103cm (21W103)				
3000K (30)		24.5W / 119.7cm (25W120)				
4000K (40)		31.5W / 153cm (32W153)				
5700K (57)		42W / 203cm (42W203)				
TUNABLE WHITE						
	Colour Temperature	CRI	Watt* / Length			
	Tunable White	80+ (80)	10W / 53cm (10W053)			
	2700K-5700K (TW)		15W / 78cm (15W078)			
			20W / 103cm (20W103)			
			25W / 128cm (25W128)			
			30W / 153cm (30W153)			
			40W / 203cm (40W203)			
	RGBWW / RGBCW / RGB					
	Colour		Watt* / Length			
	RGBWW (RGBWW)		13.5W / 53cm (14W053)			
	RGBCW (RGBCW)		23.1W / 88.7cm (23W089)			
	84LED/m		27W / 103cm (27W103)			
			32.8W / 124.4cm (33W124)			
			40.5W / 153cm (41W153)			
			54W / 203cm (54W203)			
	RGBWW (RGBWW)		9.7W / 53cm (10W053)			
	RGBCW (RGBCW)		15.6W / 83cm (16W083)			
	60LED/m**		19.5W / 103cm (20W103)			
			23.4W / 123cm (23W123)			
			29.2W / 153cm (29W153)			
			39W / 203cm (39W203)			
	RGB (RGB96)		11.5W / 53cm (12W053)			
	96LED/m		20.1W / 90.5cm (20W091)			
			23W / 103cm (23W103)			
			27.3W / 121.7cm (27W122)			
			34.5W / 153cm (35W153)			
		46W / 203cm (46W203)				
	RGB (RGB60)		7.2W / 53cm (07W053)			
	60LED/m**		11.6W / 83cm (12W083)			
			14.5W / 103cm (15W103)			
			17.4W / 123cm (17W123)			
			21.7W / 153cm (22W153)			
			29W / 203cm (29W203)			
	RGB (RGB30)		3.6W / 53cm (04W053)			
	30LED/m**		5.7W / 83cm (06W083)			
			7.2W / 103cm (07W103)			
			8.6W / 123cm (09W123)			
			10.8W / 153cm (11W153)			
			14.4W / 203cm (14W203)			

* Available in other colours or/and power upon request.

** The LED density of these ribbons is low thus, the homogeneity of lighting surface of Milky type luminaire will be affected.

Ordering Code Example: CORNER II 67-AN-RGB60-17W123-OP-24